



Better Installations Through Marcy Innovations

2025 PRODUCT CATALOG

www.marcyadhesives.com




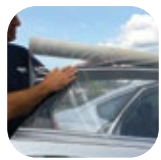












QUANTUM
MOLDINGS

INTRODUCING OUR LATEST INNOVATION

NEW



Table of Contents

	Universal Moldings Introduction	pg. 1		Masking Tape	pg. 9
	Quantum Moldings™	pg. 2		WindowGuard™	pg. 10
	Rubber Channel Moldings	pg. 3		Attachment Tape	pg. 11
	Maximum Performance Tips for Marcy Moldings	pg. 4		Scratch Prevention Tapes	pg. 12
	Underglass Moldings	pg. 5		Scratch Prevention Tapes (cont'd)	pg. 13
	Sensor Pads	pg. 6		Foam Core & Solid Core Butyl Tape	pg. 14
	QuickCure™ Rain Sensor Gel & Accessories	pg. 7		Foam Tape & Dash Catch Foam	pg. 15
	Retention Tape	pg. 8		Applicators, and Glass & Mirror Sanding Belts	pg. 16

UNIVERSAL MOLDINGS

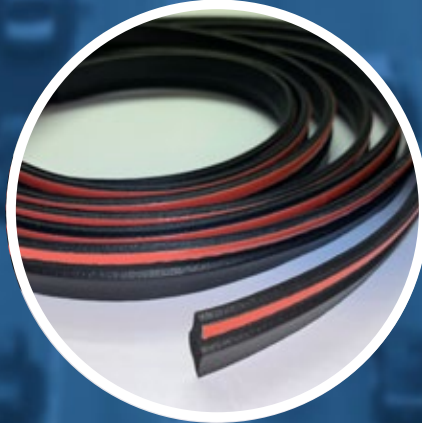


Made in USA

NEW



Quantum Moldings



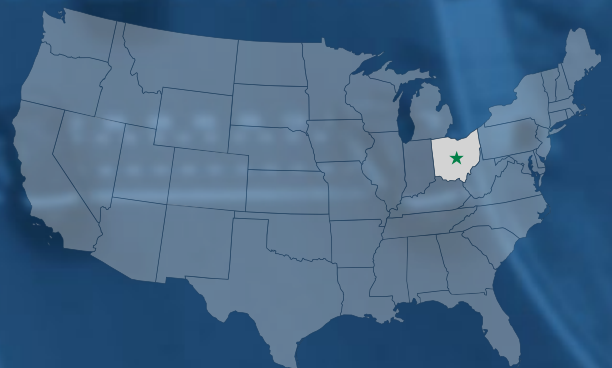
Underglass Moldings



**Rubber Channel
Moldings**

ABOUT US

Located in the heart of the U.S. polymer belt, Marcy has designed and now produces the world's best universal moldings. Marcy combines product innovation with a tradition of manufacturing expertise.



INTRODUCING

QUANTUMTM MOLDINGS

*patent pending

THE NEXT GENERATION
OF UNIVERSAL MOLDINGS

NEW



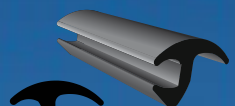
Made in USA

**FIT A 90° CORNER,
WITHOUT NOTCHING!**

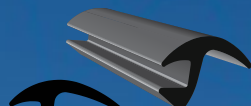
- ✓ Ultra-flexible, in extreme cold or heat
- ✓ Beautiful satin finish
- ✓ Won't fade or shrink
- ✓ New sustainable material
- ✓ No messy butyl
- ✓ Prime per PU manufacturer's instructions

Marcy QuantumTM Moldings are the most flexible replacement moldings ever produced. They will turn super sharp, tight corners easily and still lay down flat. This means you can use the Quantum universals on more vehicles. And in extreme cold and heat. QuantumTM Moldings have a great looking satin finish, which won't fade, shrink, or crack. And there's no messy butyl. Simply prime per PU manufacturer's instructions.

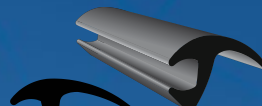
QuantumTM Moldings, made with a zero GHG compound, combine unmatched sustainability with superior performance. That's why we call them The Next Generation of replacement moldings.



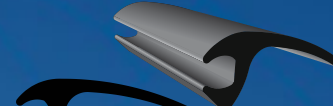
QM16
16mm x 75ft



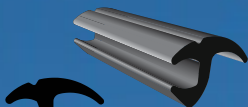
QM19
19mm x 75ft



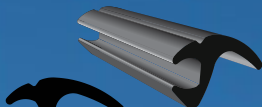
QM25
25mm x 75ft



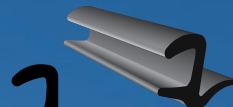
QM31
31mm x 50ft



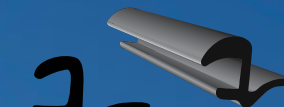
QM16L
16mm x 75ft



QM19L
19mm x 75ft



QM7
7mm x 75ft



QM10
10mm x 75ft

Rubber Channel Moldings

Marcy Rubber Channel Moldings fit around corners better than any other plastic, TPO, or rubber molding. Only Marcy's Quantum Moldings corner better. They work so well you can replace many part-specific moldings, improving your bottom line.

Produced with a unique blend of synthetic rubber and a distinctive channel design with butyl, Marcy Rubber Channel Moldings provide consistent and superior performance under demanding conditions. Marcy Moldings provide excellent cornering and grip, giving a professional finish to the installation, both in the shop and out on the road, whether hot or cold, wet or dry. Marcy Moldings work for you, not against you.



EIGHT PROFILES AVAILABLE*

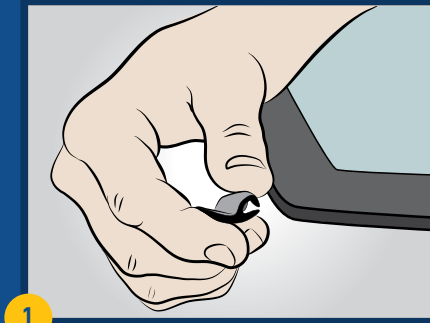


Part No.	Description	Unit Packaging
M16	16mm x 22.8m (5/8" x 75') Clean-Stick Butyl	single reels; 6 reels/case
M19	19mm x 22.8m (3/4" x 75') Clean-Stick Butyl	single reels; 6 reels/case
M25	25mm x 22.8m (1" x 75') Clean-Stick Butyl	single reels; 6 reels/case
M31	31mm x 15.2m (1.25" x 50') Clean-Stick Butyl	rolled in box; 5 boxes/case
M16L	16mm x 22.8m (5/8" x 75') Clean-Stick Butyl & Design Line	single reels; 6 reels/case
M19L	19mm x 22.8m (3/4" x 75') Clean-Stick Butyl & Design Line	single reels; 6 reels/case
M7	7mm x 22.8m (1/4" x 75') Clean-Stick Butyl	single reels; 6 reels/case
M10	9.5mm x 22.8m (3/8" x 75') Clean-Stick Butyl	single reels; 6 reels/case

* Additional profiles available upon request.

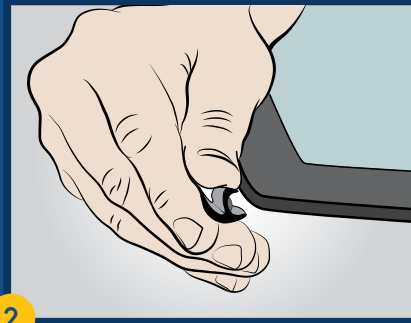
Quantum & Rubber Channel Molding Installation Instructions

1 EASY APPLICATION



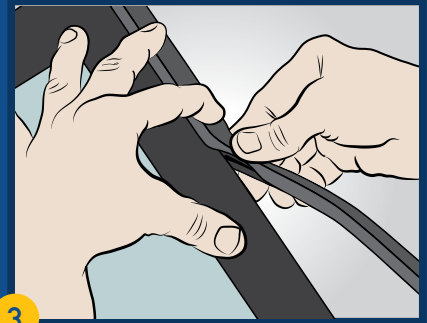
1

Position near glass.



2

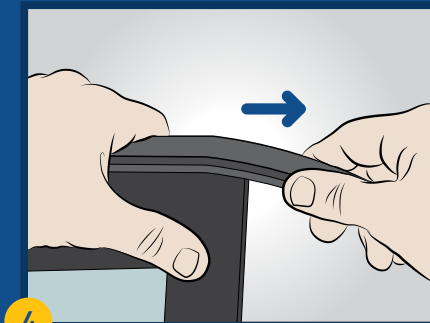
Pinch open the channel.



3

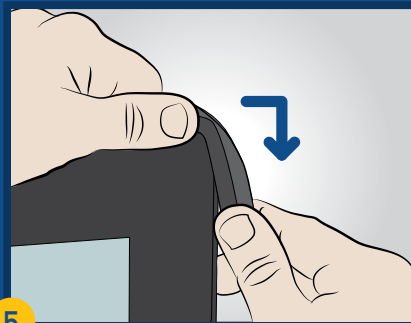
Apply with one hand, securing with the other; apply molding at 45° angle at point of contact

2 TURN TIGHT CORNERS



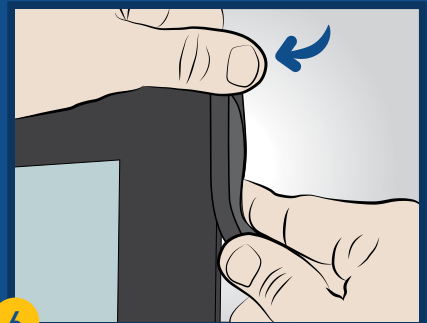
4

Hold with one hand, lightly stretch with the other.



5

Maintain stretch, pinch open channel, pull around corner.



6

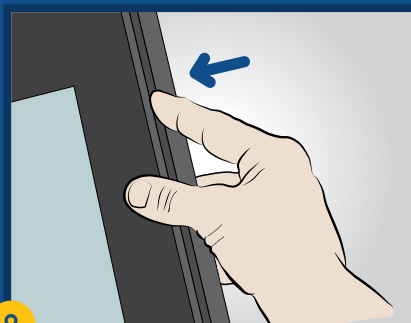
Secure attached corner with one hand. Apply 8" more before releasing grip on corner.

3 SECURE FINISH



7

Finish application. Dress corners for a secure and flush finish.



8

For best grip to glass, apply pressure to back of channel...



9

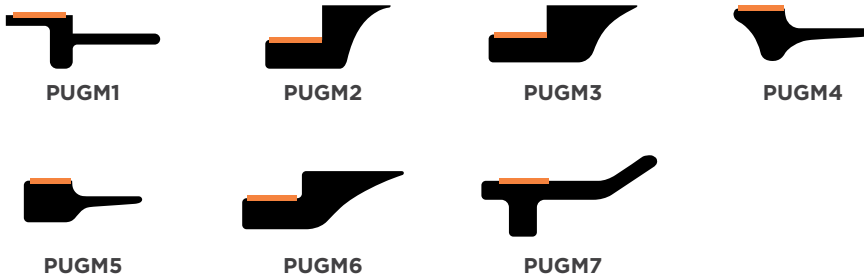
...continue along entire length of molding.

Underglass Moldings

An increasing number of new vehicles are designed with exposed-edge glass and under-the-glass moldings. Marcy's universal Underglass Moldings are designed to make the work of the glass installer quicker, easier, and more profitable for these types of replacements and reinstalls.

Marcy's PUGMs are the latest in Underglass Molding technology. The PUGMs are made from Marcy's unique blend of synthetic rubber compound, providing extreme flexibility and cornering—including 90 degree corners—without the need to miter or relief cut.

All of Marcy's Underglass Moldings are self-adhesive and flexible to allow for superior cornering. Further, we use a high-bond, HATS adhesive that blends with the frit, resulting in an ideal aesthetic look without the need to use black primer on the edge.



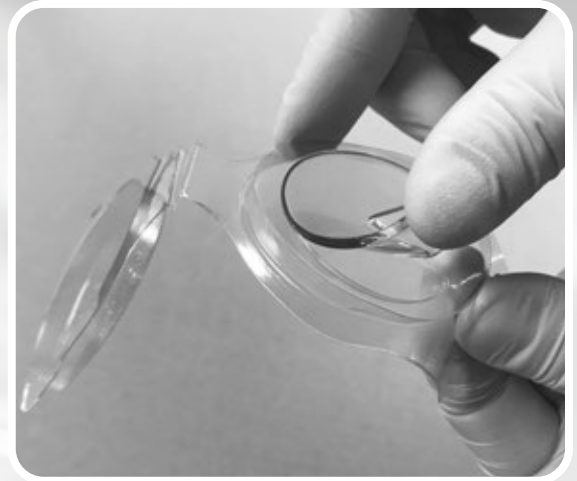
Part No.	Description	Unit Packaging
PUGMs – single extrusion*		
PUGM1	8mm x 22.8m (5/16" x 75") - Solid	1 reel/box; 6 reels/case
PUGM2	5mm x 22.8m (7/32" x 75") - Sponge	1 reel/box; 6 reels/case
PUGM3	7mm x 22.8m (9/32" x 75") - Sponge	1 reel/box; 6 reels/case
PUGM4	7mm x 22.8m (9/32" x 75") - Medium Firm Sponge	1 reel/box; 6 reels/case
PUGM5	6mm x 22.8m (1/4" x 75") - Firm Sponge	1 reel/box; 6 reels/case
PUGM6	9.5mm x 22.8m (3/8" x 75") - Sponge	1 reel/box; 6 reels/case
PUGM7	10mm x 22.8m (13/32" x 75") - Solid	1 reel/box; 6 reels/case

* Additional profiles available upon request.

MARCY SensorPads™

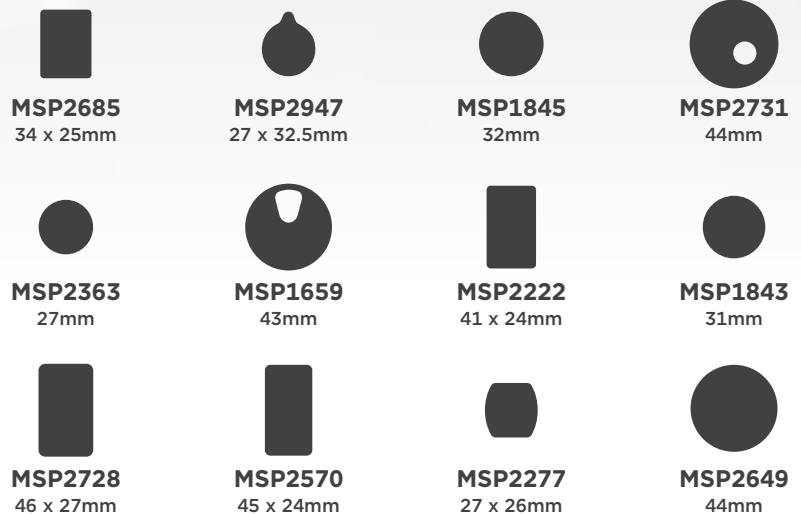


Marcy Sensor Pads are made using a special, fingerprint-resistant silicone. The patented clamshell molds produce a consistent shape and thicker pad, making for a better fit and contact to glass. Helps you to avoid air pockets. Protective package makes pads easy to remove and apply, free from contaminants. No hassles with bags or hard-to-remove liners. User-friendly, cost-effective, consistent quality. Marcy Sensor Pads. Now NAGS listed.



U.S. Pat. No. D880,291 and other U.S. and non-U.S. patents pending

- ✓ **Thicker for better fit**
- ✓ **Fingerprint-resistant**
- ✓ **Silicone for easy handling**
- ✓ **Easy-to-use package**
- ✓ **Recycled/Recyclable RPET**
- ✓ **Made in USA**



*Also available in acrylic upon request.

Part No.	Description	Unit Packaging
MSP2685	34mm x 25mm	1 per clamshell; 5/bag
MSP2947	27mm x 32.5mm	1 per clamshell; 5/bag
MSP1845	32mm	1 per clamshell; 5/bag
MSP2731	44mm with circular aperture	1 per clamshell; 5/bag
MSP2363	27mm	1 per clamshell; 5/bag
MSP1659	43mm with irregular-shaped aperture	1 per clamshell; 5/bag
MSP2222	41mm x 24mm	1 per clamshell; 5/bag
MSP1843	31mm	1 per clamshell; 5/bag
MSP2728	46mm x 27mm	1 per clamshell; 5/bag
MSP2570	45mm x 24mm	1 per clamshell; 5/bag
MSP2277	27mm x 26mm	1 per clamshell; 5/bag
MSP2649	44mm	1 per clamshell; 5/bag

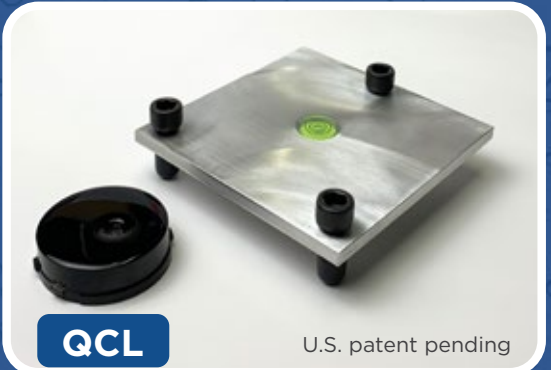
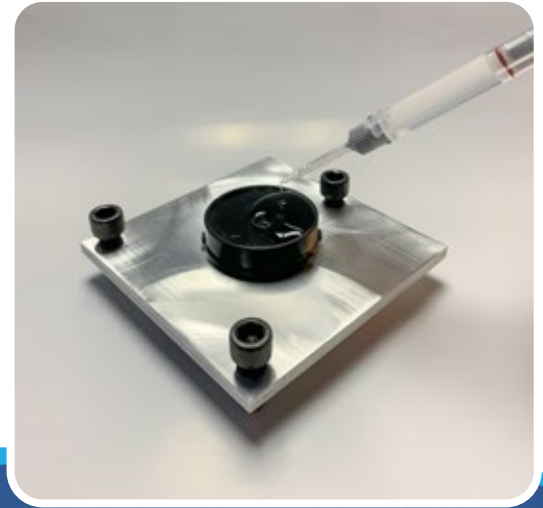
QuickCure™

RAIN SENSOR GEL



Marcy's QuickCure gel saves you both time and money. It cures real quick—half the time compared to other gels. And the QC12, with three times the gel (and extra nozzles), gives you multiple uses with a single dispenser. This cuts waste and cost. Quick, convenient, and cost-saving. Now NAGS listed.

- ✓ **Cures fast (4 min @ 70°) with perfect “crown”**
- ✓ **Cuts waste w/ multi-use QC12**
- ✓ **Saves money**
- ✓ **Clean & easy removability when fully cured. No mess! Great for warranty work or redos**
- ✓ **Made in USA**



Part No.	Description	Unit Packaging
QC4	4ml (2 x 2ml) syringe with mixing nozzle	1 bagged syringe and nozzle
QC12	12ml (2 x 6ml) syringe with 3 mixing nozzles	1 bBagged syringe and 3 nozzles
QCN	Mixing nozzle replacements (x10)	10 replacement nozzles
QCL	Gel application leveler	Leveler



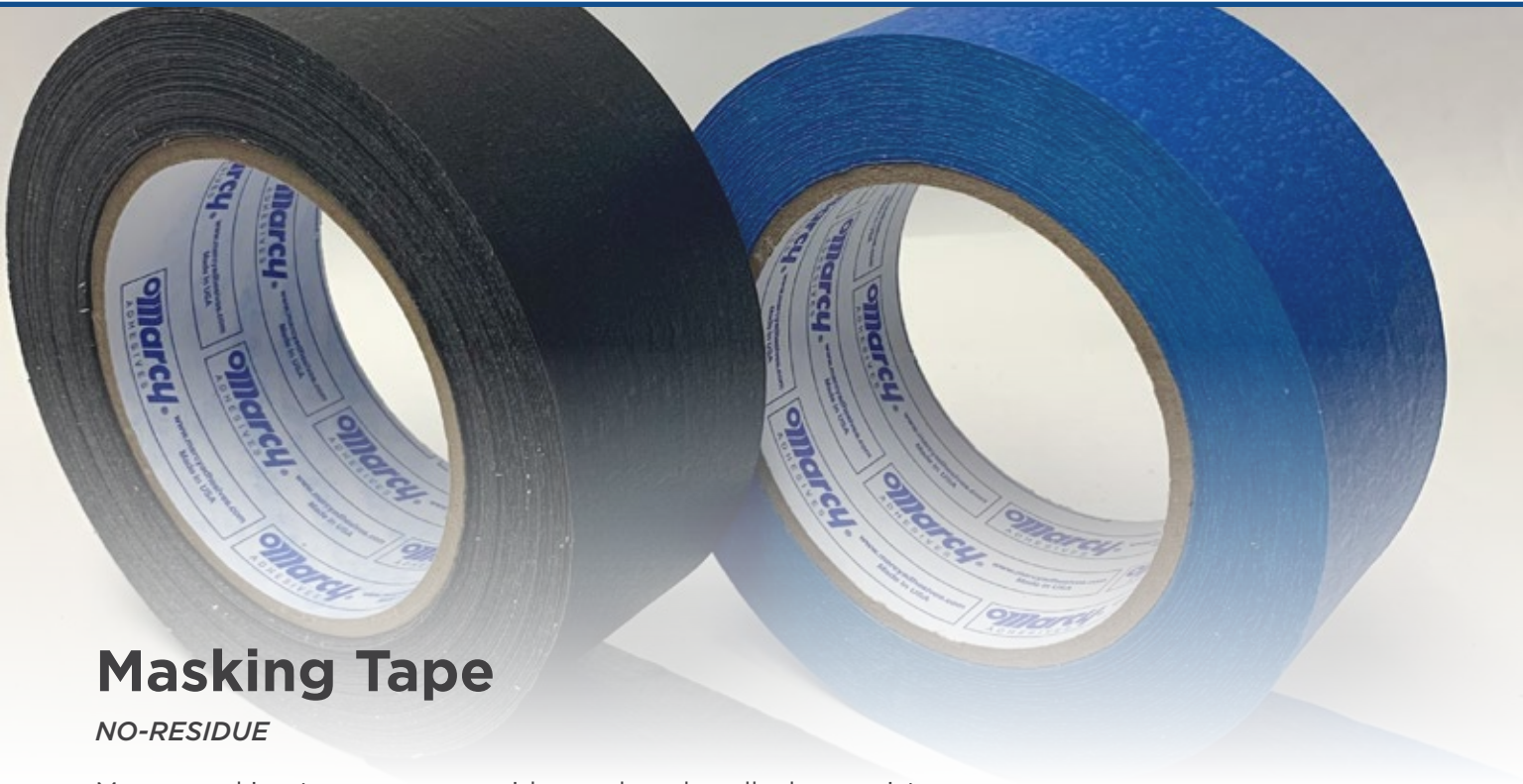
Retention Tape

ALL-WEATHER, NO-RESIDUE

Securely holds moldings in place until urethane cures, then removes cleanly without leaving residue. Available in our trademark orange, and in blue or clear; printed and non-printed.



Part No.	Description	Unit Packaging
Orange Retention Tape		
ME0072	1.5" x 108' (38mm x 32.9m) - 24-Hour label, 6" perf	32 rolls/case
ME0067	1.5" x 108' (38mm x 32.9m) - 6" perf	32 rolls/case
ME0064-150	1.5" x 108' (38mm x 32.9m)	32 rolls/case
ME0064-200	2" x 108' (50.8mm x 32.9m)	24 rolls/case
ME0082	2" x 108' (50.8mm x 32.9m) - 6" perf.	24 rolls/case
Clear Retention Tape		
ME0073	1.5" x 108' (38mm x 32.9m) - 24-Hour label, 6" perf	32 rolls/case
ME0071	1.5" x 108' (38mm x 32.9m) - 6" perf	32 rolls/case
ME0062-150	1.5" x 108' (38mm x 32.9m)	32 rolls/case
ME0062-200	2" x 108' (50.8mm x 32.9m)	24 rolls/case
ME0083	2" x 108' (50.8mm x 32.9m) - 6" perf.	24 rolls/case
Blue Retention Tape		
ME0076	1.5" x 108' (38mm x 32.9m) - 24-Hour label, 6" perf	32 rolls/case
ME0074	1.5" x 108' (38mm x 32.9m) - 6" perf	32 rolls/case
ME0079-150	1.5" x 108' (38mm x 32.9m)	32 rolls/case
ME0079-200	2" x 108' (50.8mm x 32.9m)	24 rolls/case
ME0084	2" x 108' (50.8mm x 32.9m) - 6" perf.	24 rolls/case



Masking Tape

NO-RESIDUE

Marcy masking tapes are no-residue and work well when moisture and temperature extremes are modest. Available in blue and black.

Part No.	Description	Unit Packaging
Blue Masking Tape		
ME1007-100	1" x 60 yds (24mm x 180')	36 rolls/case
ME1007-150	1.5" x 60 yds (36mm x 180')	24 rolls/case
ME1007-200	2" x 60 yds (48mm x 180')	24 rolls/case
Black Masking Tape		
ME1008-100	1" x 60 yds (24mm x 180')	36 rolls/case
ME1008-150	1.5" x 60 yds (36mm x 180')	24 rolls/case
ME1008-200	2" x 60 yds (48mm x 180')	24 rolls/case





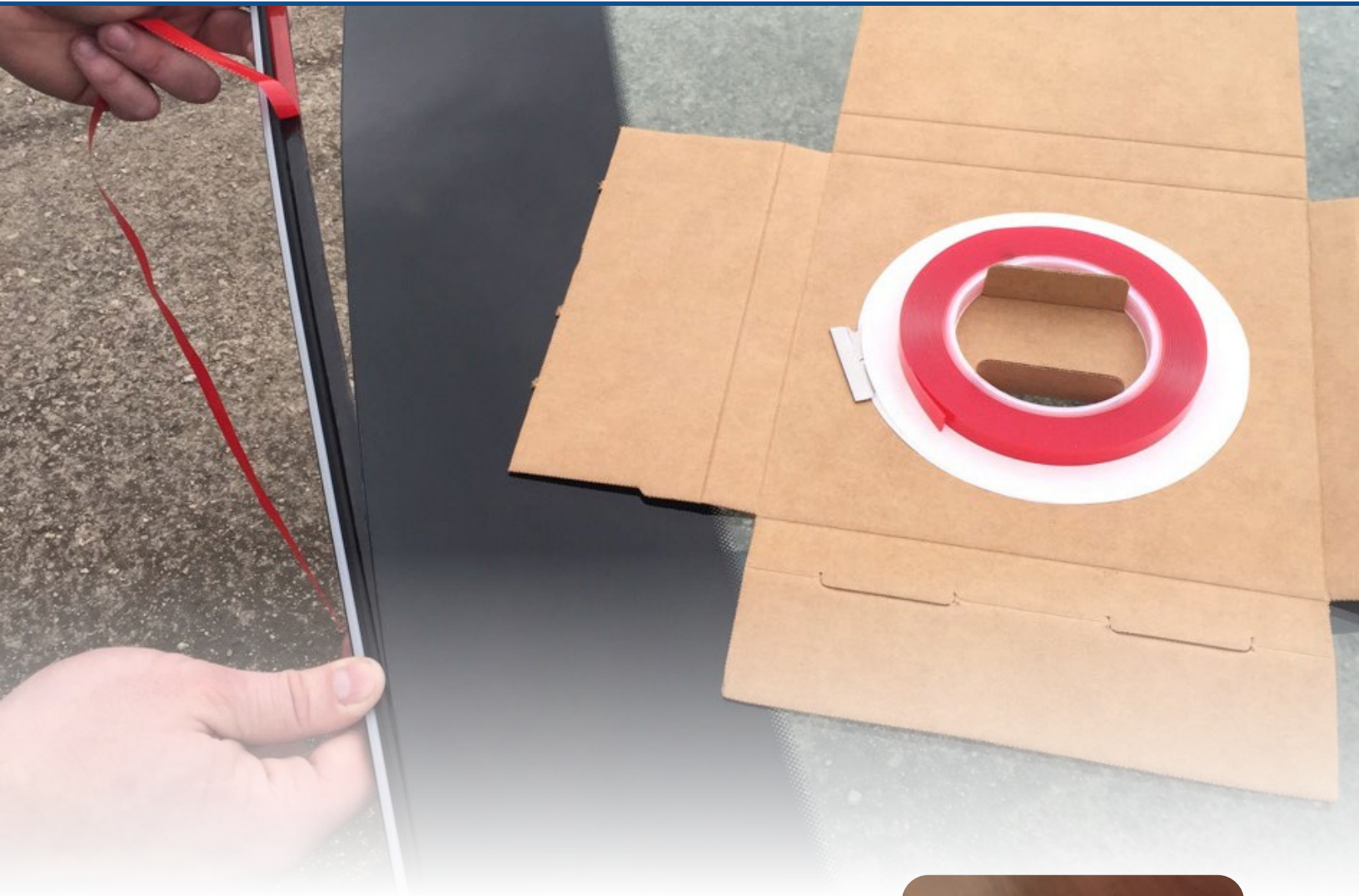
WindowGuard™

Following the breaking of vehicle glass, WindowGuard™ protects the vehicle's interior until permanent replacement glass is installed. It's quick, economical, and effective. Constructed of a clear, flexible, self-adhesive film, WindowGuard™ is perforated every 36" to make installations fast and easy. Optically clear with no-residue adhesive for clean removal.



Made in USA

Part No.	Description	Unit Packaging
ME3030	36" x 60' w/ 3' perfs. (.91m x 18.2m w/ .91m perfs.); wound on 2" (50mm) core in Smart Box™	1 roll/case
ME3038	36" x 60' w/ 3' perfs. (.91m x 18.2m w/ .91m perfs.)	1 roll/case
ME3041	36" x 99' w/ 3' perfs. (.91m x 30.1m w/ .91m perfs.)	1 roll/case
ME3300	36" x 100' (.91m x 30.4m) non-perf for backglass, etc.	1 roll/case



Attachment Tape

Attachment Tape is a general purpose, permanent, hi-bond adhesive for attachment of toll-pass and GPS devices, loose cowl or interior panels, trim pieces to the windshield (e.g, FW3857), etc.; known as “the technician’s safety net.”



Part No.	Description	Unit Packaging
ME5504	1/4" x 16.5' (6mm x 5m), Clear	Individually boxed; 16 rolls/master case
ME5508	3/8" x 16.5' (9.5mm x 5m), Clear	Individually boxed; 16 rolls/master case
ME5512	1/2" x 16.5' (12.7mm x 5m), Clear	Individually boxed; 16 rolls/master case

Scratch Prevention Tapes

Scratch Prevention Tapes are used to reduce damage to autoglass during shipping, handling, warehousing and delivery, by protecting edges, corners, brackets, wires, and all add-ons. A low cost solution for a very expensive problem.



Made in USA



Tip-Tape

*THE ORIGINAL,
THE BEST!*

Part No.	Description	Unit Packaging
Orange Tip-Tape		
ME0066	3" x 300' (6" Perf)	12 rolls/case
ME0066-600	6" x 150' (6" Perf)	8 rolls/case
ME0066-1200	12" x 300' (6" Perf)	4 rolls/case
ME0066-1250	12" x 150' (6" Perf)	4 rolls/case
Blue Tip-Tape		
ME0068	3" x 300' (6" Perf)	12 rolls/case
ME0068-600	6" x 150' (6" Perf)	8 rolls/case
ME0068-1200	12" x 300' (6" Perf)	4 rolls/case
ME0068-1250	12" x 150' (6" Perf)	4 rolls/case
Clear Tip-Tape		
ME0065	3" x 300' (6" Perf)	12 rolls/case
ME0065-600	6" x 150' (6" Perf)	8 rolls/case
ME0065-1200	12" x 300' (6" Perf)	4 rolls/case
ME0065-1250	12" x 150' (6" Perf)	4 rolls/case



Scratch Prevention Tapes

(Continued)



Bracket Protection Tape

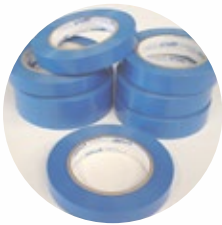
This is a thick, no-residue, large profile tape for protecting valuable sensor brackets and other critical add-ons.

Edge Tape

This tape employs strip-coated technology to provide excellent protection of glass edges, particularly when side-loaders are being used, while still being able to be easily removed.

Banding Tape

A high-tensile strength, no-residue tape that applies to surfaces such as metal, glass, and plastics. Good for unitizing, bundling, and holding parts in place.



Part No.	Description	Unit Packaging
Bracket Protection Tape		
ME0066-600	6" x 150', Orange, perf	12 rolls/case
ME0066-1200	6" x 300', Orange, 6" perf	12 rolls/case
ME0068-1250	12" x 150', Blue, 6" perf	12 rolls/case
Edge Tape (2 adhesive strips on tape edges, no-residue)		
ME6675	2" x 120', Blue, 12" perf	24 rolls/case
Banding Tape (high-tensile strength, no-residue)		
ME1944	1" x 131', Blue	48 rolls/case

Foam Core & Solid Core Butyl Tape

The best Foam Core Butyl for high quality fixed-glass installations. Our Foam Core Butyl has the best bounce-back in the business. Provides a leak-proof seal every time.

Solid Core Butyl may be used as an everyday sealant in hot and cold weather (for example, to re-adhere poly sheeting in doors) and for installation of mechanically-fastened side and back glass. Available in bulk packs and individually boxed. Auto grade. Not intended for use in installing windshields.



Made in USA

Part No.	Description	Unit Packaging
Foam Core Butyl: Individually Boxed		
ME612C	6mm x 12'	16 rolls/case
ME810B	8mm x 10'	16 rolls/case
Foam Core Butyl: Bulk Packed		
ME616C	6mm x 16'	6 rolls/case
ME816B	8mm x 16'	6 rolls/case
Solid Core Butyl: Individually Boxed ("Butyl-in-a-Box")		
ME625	1/4" x 10' (6mm x 3m) round	16 rolls/case
ME825	5/16" x 10' (8mm x 3m) round	16 rolls/case
ME925	3/8" x 10' (9.5mm x 3m) round	16 rolls/case
Solid Core Butyl: Bulk Packed		
ME615S	1/4" x 15' round	6 rolls/case
ME815S	5/16" x 15' round	6 rolls/case
ME915S	3/8" x 15' round	6 rolls/case

Foam Tape

OE-quality foam tapes with a size for every vehicle. Prevents glass from sinking (for use with all types of urethane), reduces road noise, prevents leaks, and provides professional finish.



Part No.	Description	Unit Packaging
Double-Sided (DST); high-density		
ME5492 (special-order only)	1/8" x 3/16" x 15'	12 rolls/case
ME5493 (special-order only)	3/16" x 3/16" x 15'	12 rolls/case
ME5494	1/4" x 1/4" x 15'	12 rolls/case
ME5495	5/16" x 1/4" x 15'	12 rolls/case
ME5496 (special-order only)	3/8" x 1/4" x 15'	12 rolls/case
Single-Sided (One-Way); high-density		
ME6492	1/8" x 3/16" x 18'	12 rolls/case
ME6493	3/16" x 3/16" x 18'	12 rolls/case
ME6494	1/4" x 1/4" x 18'	12 rolls/case
ME6495	5/16" x 1/4" x 18'	12 rolls/case
ME6496 (special-order only)	3/8" x 1/4" x 18'	12 rolls/case
Single-Sided; medium-density (other sizes available upon special-order request)		
ME9524	4.5mm x 4.5mm x 5.5m (3/16" x 3/16" x 18')	12 rolls/case
ME9525	6.4mm x 6.4mm x 4.5m (1/4" x 1/4" x 15')	12 rolls/case
Height Setting Blocks (single-sided foam)		
ME7493	3/16" x 3/16" x 1" — 96 blocks/pad	4 pads/bag
ME7494	1/4" x 1/4" x 1" — 72 blocks/pad	4 pads/bag
ME7495	5/16" x 1/4" x 1" — 72 blocks/pad	4 pads/bag
ME7496	3/8" x 1/4" x 1" — 72 blocks/pad	4 pads/bag

Dash Catch Expanding Foam

Expanding foam for application at the dash-windshield interface; replicates foam installed at OE for many BMW, Ford, models, etc. Additional widths from 3/8" to 1" are available by special order.



Part No.	Description	Unit Packaging
ME202002	20mm x 20mm x 2m (3/4" x 3/4" x 6.5')	16 rolls / case



Applicators

Part No.	Description	Unit Packaging
Applicators		
HT5RWD	Ring Wool Dauber, 3/4" round ball, 5" length	100 per bag; 10 bags/case
HT1RWD	Small Head Wool Dauber, 1/2" round ball, 5" length	100 per bag; 10 bags/case
HT01AB	Acid Brush, 3/8" width, 6" length	144 per bag

Glass & Mirror Sanding Belts

Closed coat abrasives used for both wet and dry sanding and beveling purposes.
Poly-cotton cloth backing. Varied sizes and grits, for both stationary and fixed sanders.

Part No.	Description	Unit Packaging
321220	3" x 21" (76mm x 533mm) 220 grit	5 belts/box
321120	3" x 21" (76mm x 533mm) 120 grit	5 belts/box
32180	3" x 21" (76mm x 533mm) 80 grit	5 belts/box
324180	3" x 24" (76mm x 610mm) 180 grit	5 belts/box
324120	3" x 24" (76mm x 610mm) 120 grit	5 belts/box
324100	3" x 24" (76mm x 610mm) 100 grit	5 belts/box
32480	3" x 24" (76mm x 610mm) 80 grit	5 belts/box
424120	4" x 24" (102mm x 610mm) 120 grit	5 belts/box
46480	4" x 64" (102mm x 1.625m) 80 grit	5 belts/box
4106400	4" x 106" (102mm x 2.69m) 400 grit	5 belts/box
4106220	4" x 106" (102mm x 2.69m) 220 grit	5 belts/box
4106180	4" x 106" (102mm x 2.69m) 180 grit	5 belts/box
4106120	4" x 106" (102mm x 2.69m) 120 grit	5 belts/box
4106100	4" x 106" (102mm x 2.69m) 100 grit	5 belts/box
410680	4" x 106" (102mm x 2.69m) 80 grit	5 belts/box
410660	4" x 106" (102mm x 2.69m) 60 grit	5 belts/box

Marcy's Code of Sustainability

While the world of business is grounded in and often inspired by competition, we also believe that cooperative partnerships are a higher form of relationship that benefits all concerned parties. Sustainable, long-term relationships that emphasize shared interests are the bedrock of our company's success, guiding our conduct and shaping our priorities both large and small.

Yet sustainability goes well beyond preserving corporate relationships and profits. Rather, it is rooted in an ethic of care and concern for the natural world upon which all life ultimately depends, and to the interconnected web of social relationships that form the human community. This care and concern for both the social and natural world extends beyond the immediate present to encompass generations yet to come.

Therefore we make it a company policy to opt for more environmentally-friendly materials to produce our products (e.g., using water-based adhesives vs. solvents), to package them (e.g., using compact "Smart Box™" designs), and to reduce waste within our own operations (recycling of papers, plastics, and corrugated, energy efficient lighting, re-use of packaging and pallets, and use of ionized-filtered water instead of bottled).

But perhaps our greatest contribution to sustainability, beyond our own internal operations, is in the waste-reduction products we currently produce and supply for the glass industry. For example, one of our products, Windshield Tip-Tape, was reported by an overseas customer to have reduced damaged or scrapped glass from 4% to under 1%. This means less landfill waste and reduced materials/energy/carbon required to replace damaged goods. Further, many of our packaging products require far less material (and disposable scrap) than alternative products. Finally, we are actively working on the development of an all-bio, fully biodegradable line of tapes for the auto glass industry which will further reduce waste/materials/emissions in the automotive and glass industries.

In sum, we believe that sustainability is good business because it makes our operations more efficient, our products of greater value, and our sense of purpose stronger. Sustainable business practices are mindful of the present and future, satisfying the demands of both the bottom-line and the distant horizon.

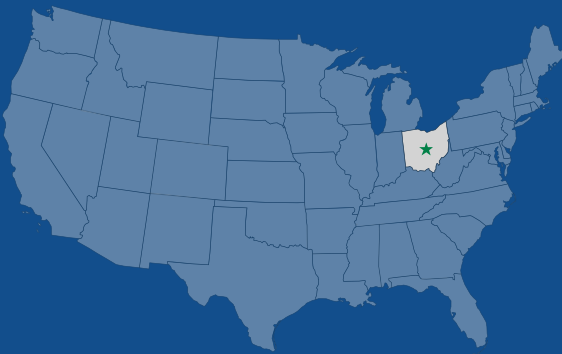


About Marcy Adhesives

Marcy invents, manufactures, and distributes adhesive-related products for the automotive glass industry. Founded in 1973, and located in the heart of the U.S. polymer belt, Marcy combines product innovation with a tradition of manufacturing expertise.

Marcy's singular focus is to produce products that are truly great in every respect—form, function, and performance—and of unsurpassed quality in their category. This pursuit of excellence has led Marcy to produce such outstanding products as Quantum Moldings, QuickCure Rain Sensor Gel, Sensor Pads, Pro-Grade Universal Moldings, Tip-Tape, Edge Tape, Window Guard, Shark Tape, No-Residue Molding Retention Tape, and self-adhesive Underglass Moldings.

All of Marcy's core products are made in the USA to rigorous quality standards.



Contact Us Today!

1-614-471-5200

info@marcyadhesives.com