

# Marcy Moldings

## Tips for Maximum Performance

Now that you've got your hands on The World's Best Universal,<sup>™</sup> here are a few tips for Maximum Performance with our Channel Moldings:

WATCH THE MARCY MOLDINGS  
DEMO VIDEOS ON YOUTUBE!

Scan the QR Codes with your phone

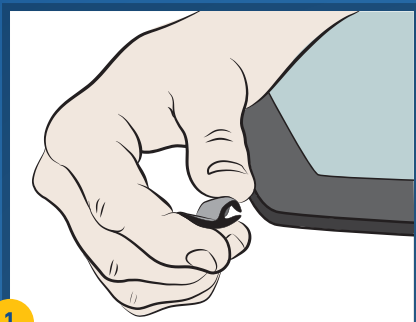


Channel Molding  
Installation



Underglass Molding  
Installation

### 1. EASY APPLICATION



Position near glass.

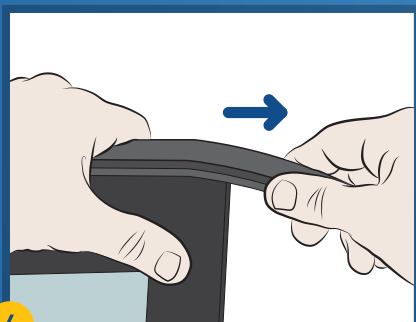


Pinch open the channel.

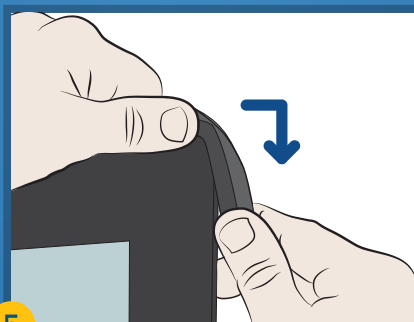


Apply with one hand, secure with the other.

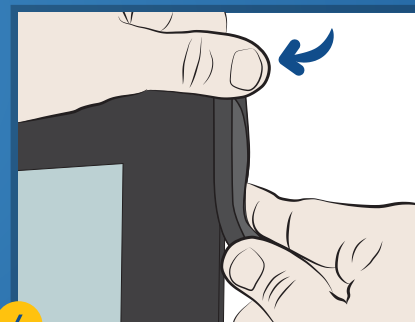
### 2. TURN TIGHT CORNERS



Hold with one hand, lightly stretch with the other.

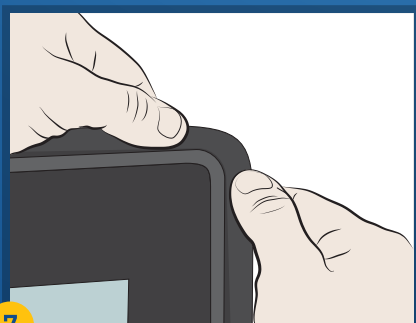


Maintain stretch, pinch open channel, pull around corner.

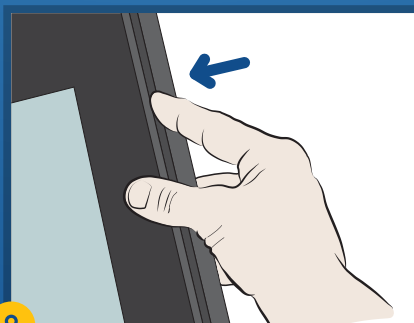


Secure attached corner with one hand. Apply 8" more before releasing grip on corner.

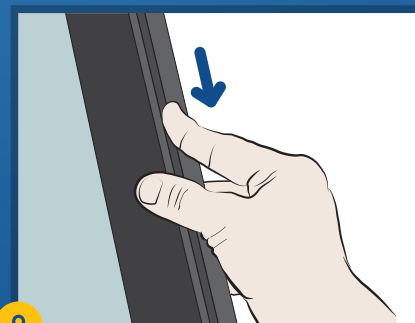
### 3. SECURE FINISH



Finish application. Dress corners for a secure and flush finish.



For best butyl-to-glass contact, apply pressure to back of channel...



...continue along entire length of molding.

